

Smart Design for an Intelligent Price



BARKLEY RIDGE APARTMENT HOMES

BARKLEY RIDGE is a brand new affordable housing community within walking and biking distance of Puget Sound. Comfortable elegance and superior craftsmanship combine to form the comforts of home. These contemporary apartments offer four classic floor plans with the finest design features essential for modern living.

FEATURES

- Peaceful nature trail
- Controlled gated access
- Carriage, 1-, 2- and 3-bdrm homes
- Full appliance suite
- Fireplaces
- Private patios and decks
- Clubhouse with health club facilities
- Refreshing water fountain pool
- Business center with WiFi
- Large screen movie theater
- Easy access to Pacific Hwy and I-5

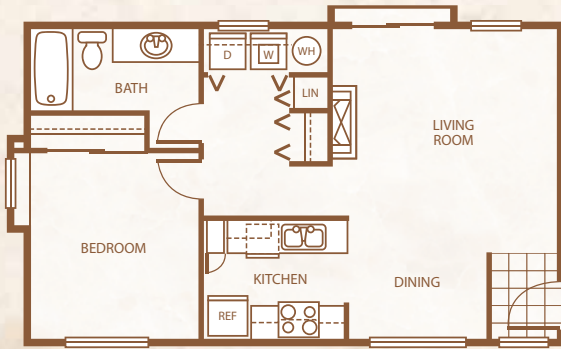
BUILT GREEN FOR A BETTER COMMUNITY

Barkley Ridge incorporated many Built Green features into the planning of these apartments. Construction included using environmentally friendly recycled concrete to keep waste from ever entering a landfill and applying low VOC paints & primers (which help us all breath better). Also, our builders installed recycled carpets made from post-consumer recycled materials. Live wiser, safer, smarter and greener at Barkley Ridge.

1-253-941-5900 TOLL-FREE

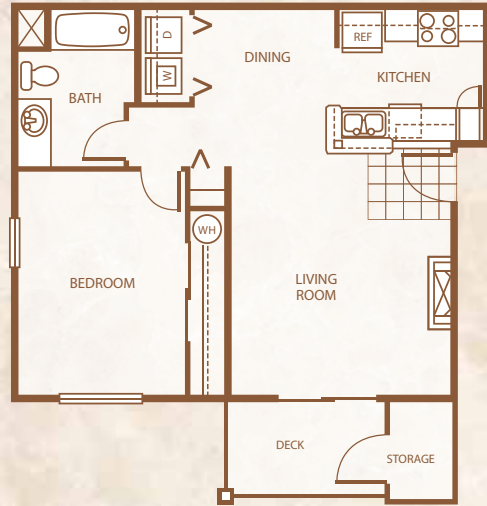
27830 Pacific Hwy S. • Federal Way, WA 98003 • www.barkleyridge.com





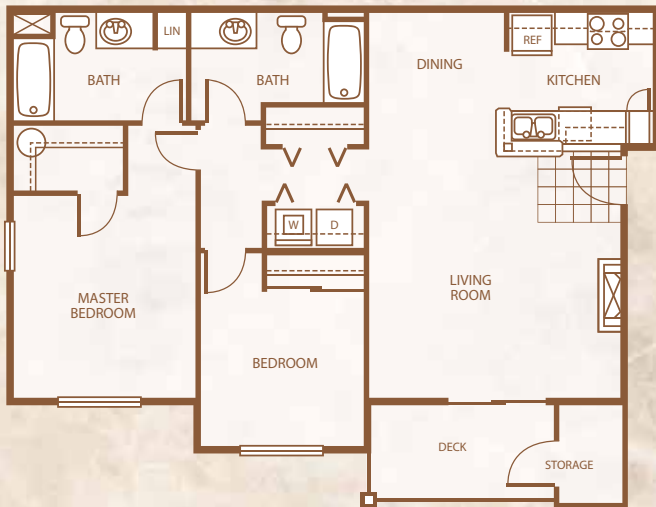
Apex

Carriage House • 679 sq ft*



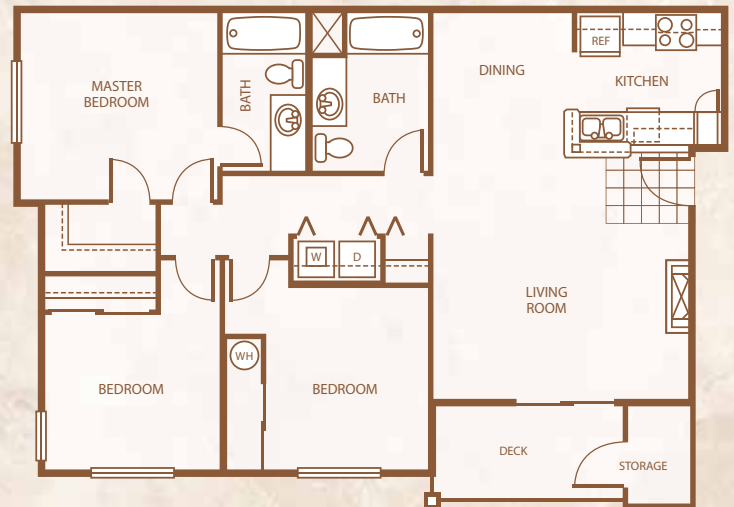
Peak

1 Bedroom / 1 Bath • 786 sq ft*



Serac

2 Bedroom / 2 Bath • 1085 sq ft*



Summit

3 Bedroom / 2 Bath • 1220 sq ft*



BARKLEY RIDGE

APARTMENT HOMES

New, Green Affordable Community
OPENING JUNE 2008



DIRECTIONS: From I-5, take S 272nd St (Exit 147). Head west on S 272nd St. and take a left at Pacific Hwy S/Hwy 99. Barkley Ridge is on the left. (You will drive past property and perform a u-turn to enter property from Pacific Hwy S).

Barkley Ridge is a participant in Washington State's Low Income Housing Tax Credit Program. Income limits apply.

AFFORDABLE HOUSING QUAL.

OCCUPANTS	MAX. INCOME
1	34,200
2	39,060
3	43,980
4	48,840
5	52,740

* Floorplan square footage includes patio/deck and storage.